



# MASKING

## BEST PRACTICE

## RECOMMENDED PRODUCTS

### Moldings and Trim

Use trim tape to lift moldings off of the vehicle surface to allow paint coverage under the molding and eliminate a hard paint line. Carborundum trim tape can fit all moldings and is perforated for easy tearing. Works well on sidelights, back glass moldings and flush mount windshields.

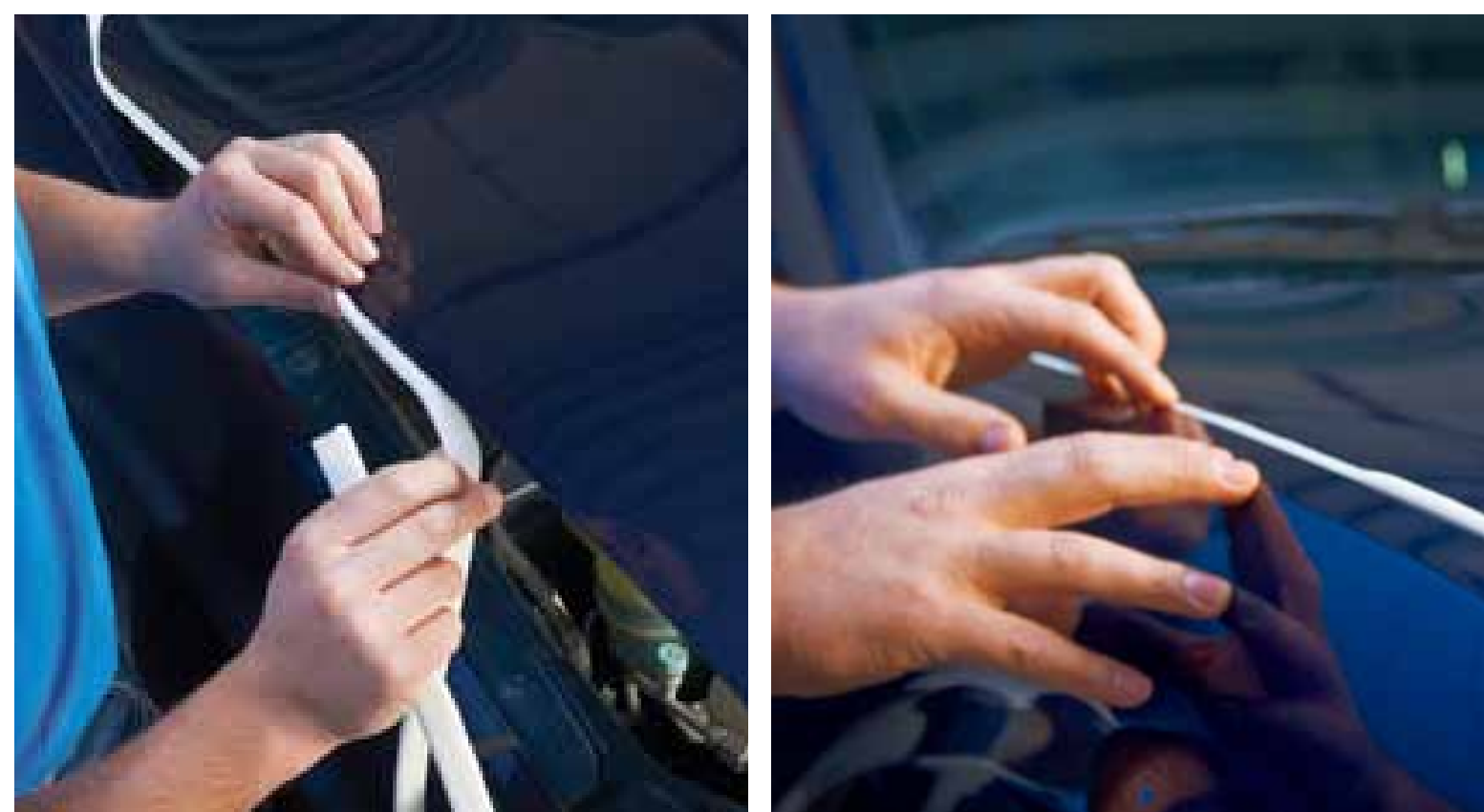
**Objective:** Allow paint coverage under the moldings and eliminate hard paint edges around moldings and trim



### Protect Jamb and Body Apertures

Use premium foam masking tape to protect jambs and apertures from overspray and to produce a soft paint edge. Using masking tape and paper takes longer and creates a hard paint edge. Premium foam masking tape can be applied to fixed or moving parts and the offset adhesive should be applied to the inside of the panel. Close the panel then smooth the tape to the desired depth.

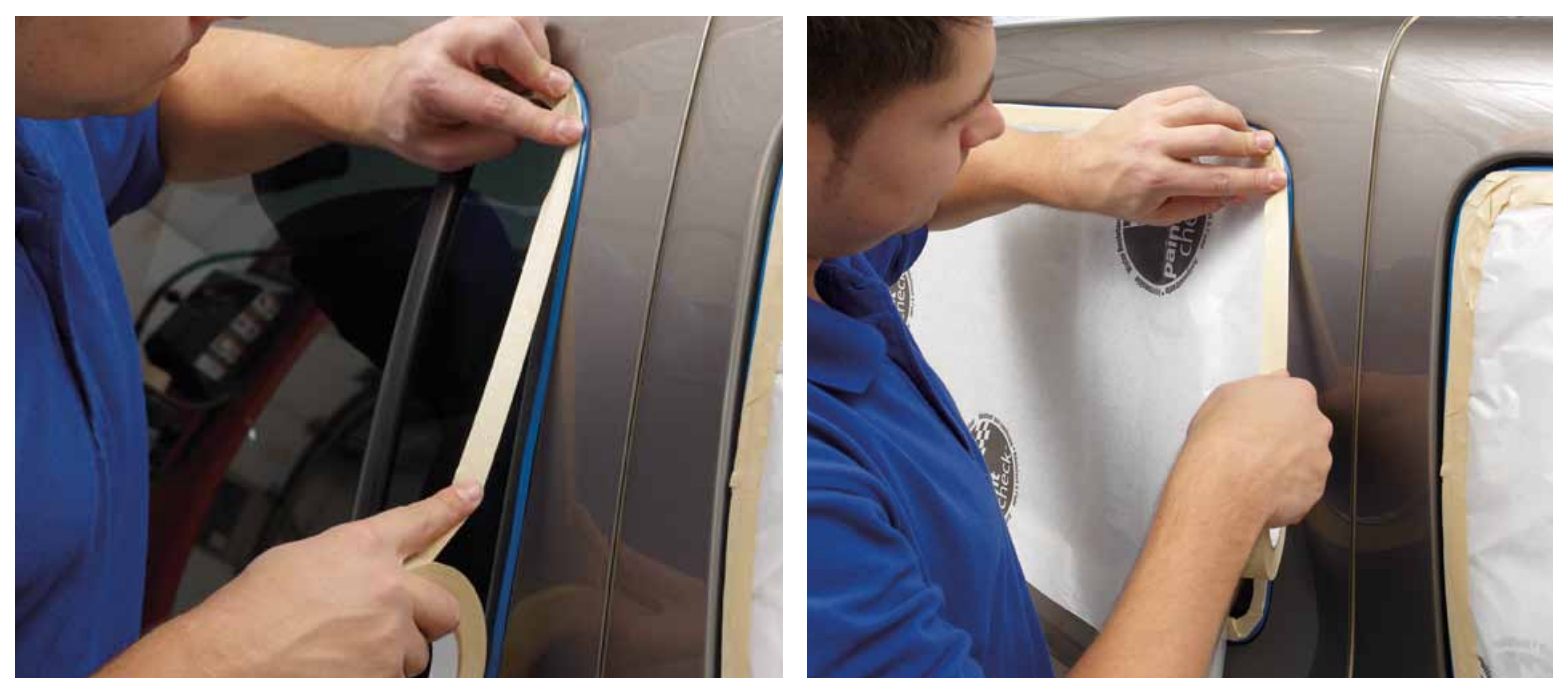
**Objective:** Prevent paint overspray from penetrating jambs, hood and trunk gutters etc. and to produce a soft paint edge.



### Windows

Use masking tape and paper to cover windows, lights and trim within the spray area. Use fine line tape first if you have difficult contours to mask.

**Objective:** Prevent paint overspray on the glass, lights and trim.



### Outline the Spray Area

Outline the spray area with Carborundum white "Paint Check" paper.

**Objective:** Using the white "Paint Check" paper will not distort the light that reflects into the paint match area, as can happen with colored paper. The coverage test "Paint Check" logo helps to gauge paint coverage.

**Tip:** To keep the paint area cleaner while spraying, reverse mask the wheel wells with 18" paper. This measure will keep most, if not all, of the dirt that is behind the wheel to stay underneath the car.



### Cover the Vehicle

Outline the area to be sprayed with 1-1/2" masking tape. Cover the entire vehicle with plastic sheeting and then cut out the area to be sprayed. Attach the plastic along the cut edge to the tape outline using 3/4" or 1-1/2" masking tape.

**Objective:** Protect panels that are not being painted from overspray.



### Final Check

Double check that all exposed areas are covered, including the wheels using EZ Wrap paintable plastic wheel maskers.

**Objective:** Prevent costly re-work.



PART NO.	SIZE
<b>PREMIUM TRIM MASKING TAPE – PERFORATED</b>	
99359	50mm x 10m (2' x 10.94 yds.)
<b>BLUE FINE LINE MASKING TAPE</b>	
30152	1/8" x 36 yds.
30153	1/4" x 36 yds.
30154	1/2" x 36 yds.
99364	3/4" x 36 yds.
<b>PREMIUM FOAM MASKING TAPE</b>	
99362	20mm x 50m (3/4" x 54.6 yds.)
<b>FOAM MASKING TAPE</b>	
99363	13mm x 50m (1/2" x 54.6 yds.)
<b>TAN – PREMIUM MASKING TAPE</b>	
70407	18mm x 55m (3/4")
70408	36mm x 55m (1-1/2")
70409	48mm x 55m (2")
<b>TAN – PREMIUM MASKING TAPE-DOUBLE ROLL</b>	
01432	18mm x 110m (3/4")
<b>GOLD – PERFORMANCE MASKING TAPE</b>	
99366	18mm x 55m (3/4")
99367	36mm x 55m (1-1/2")
99368	48mm x 55m (2")
<b>EZ SHEET TRI-LAYER PAINTABLE PLASTIC</b>	
63770	12' x 400'
63896	14' x 350'
63769	16' x 350'
63895	20' x 350'
<b>OVERSPRAY PROTECTIVE SHEETING</b>	
70530	12' x 400'
06728	16' x 400'
<b>MOBILE MASKER</b>	
89212	4 tier-2 up to 12", 2 up to 18"
<b>WHITE "PAINT CHECK" MASKING PAPER</b>	
70582	6' x 750'
70583	12' x 750'
70584	18' x 750'
99424	24' x 750'
70585	36' x 750'
<b>EZ WRAP WHEEL MASKERS</b>	
68511	Fits up to 17"



**NEW!**  
SCAN THIS CODE WITH YOUR SMARTPHONE  
TO VIEW THE BEST PRACTICES VIDEO

[www.facebook.com/CarboAuto](http://www.facebook.com/CarboAuto)  
[www.YouTube.com/CarboAuto](http://www.YouTube.com/CarboAuto)

[www.carboauto.com](http://www.carboauto.com)

